

bilbette®

# USER GUIDE

## DAY & NIGHTWEAR

A modern brand specializing in lingerie solutions for special tasks and more!



# ABOUT US



## BRA-FITTING

For years, we have been experts in the lingerie industry, we are internationally qualified in bra-fitting and shape wear, we hold trademarks and dermatological certificates for all our glue-based body products. In 2021, our offer was extended to include eco-friendly nightwear, lounge and daywear.

Our underwear just works - we have dressed women for years. As a brand run by women, we understand the needs of other women best.

#bilbetteoriginal

Are you wondering how to take care of the purchased clothing so that it serves you as long as possible? This guide will help you with that.

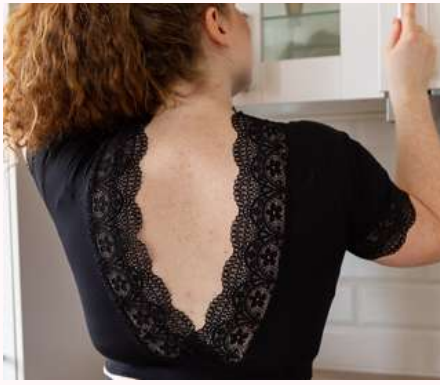


## CARING FOR COTTON NIGHTWEAR

The Parisian sleep collection is made out of 94% cotton & 6% elastane blend of organic origin. This collection has french lace inserts which are very delicate and should be cared for.

We always recommend washing this nightwear at max 30 degrees on a gentle wash. Wash with similar colours - especially when it comes to "off white" colours. Our ecru shade can be colour sensitive, and should never be washed in higher temperatures nor in detergents consisting of bleach. They may make the colour wash off. Always use eco friendly natural detergents for your underwear or nightwear to make the garments last longer. We recommend the eco friendly Eucalan washing liquid from our store.

Once washed, reshape whilst damp, line dry. Do not tumble dry. You can iron on the reverse side on medium heat setting if you love a creese free look. We recommend program "Silk" for the lace inserts.



## CARING FOR VISCOSE CLOTHING

Viscose is a highly absorbent fabric and therefore very delicate especially when wet. This is why we recommend you hand wash, with cold or lukewarm water (maximum 30° C) rather than machine washing. Do not tumble dry, do not bleach.

Once washed, don't squeeze or hand-wring viscose. Lay your garment flat or drape it over the bar of a drying rack, gently smoothing it to avoid wrinkles as it dries. Do not leave your viscose clothing in direct sunlight.

Viscose should be ironed on the reverse side when it is still damp. We recommend program "Silk" on the whole garment.

Our Extravaganza collection is made out of LENZING™ ECOVERO™ fibers and is certified with the EU Ecolabel. 94% Viscose, 6% Elastane.

A woman in a black long-sleeved top and pants stands on the left, looking towards the camera. A woman in a white short-sleeved top and shorts stands on the right, looking back over her shoulder. They are in a clothing store with a gold clothing rack in the background. A white text box is overlaid in the center.

# THANK YOU

This user guide was prepared  
by a certified Bilbette bra-fitter.